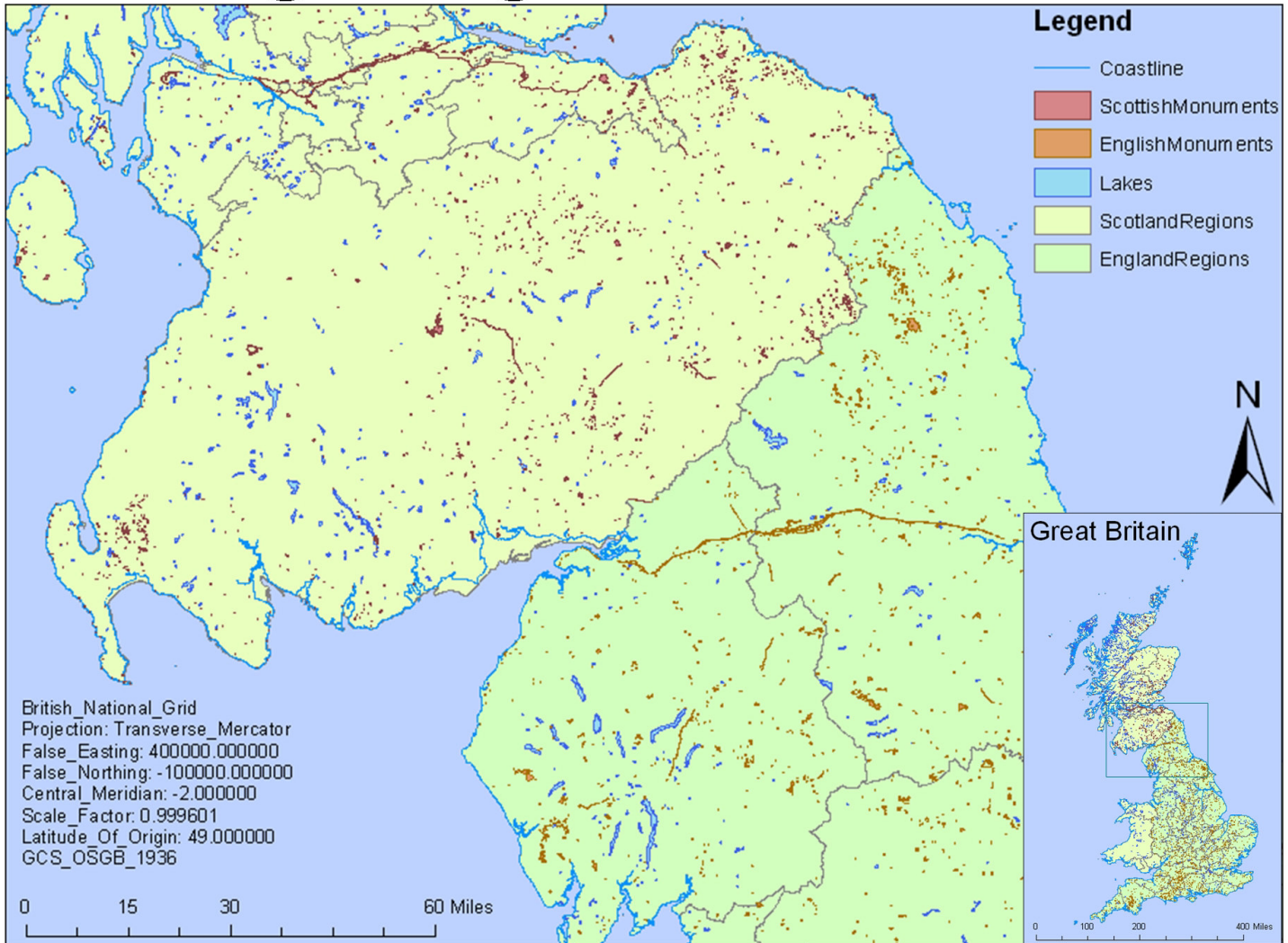


# Iron Age Anglo-Scottish Border

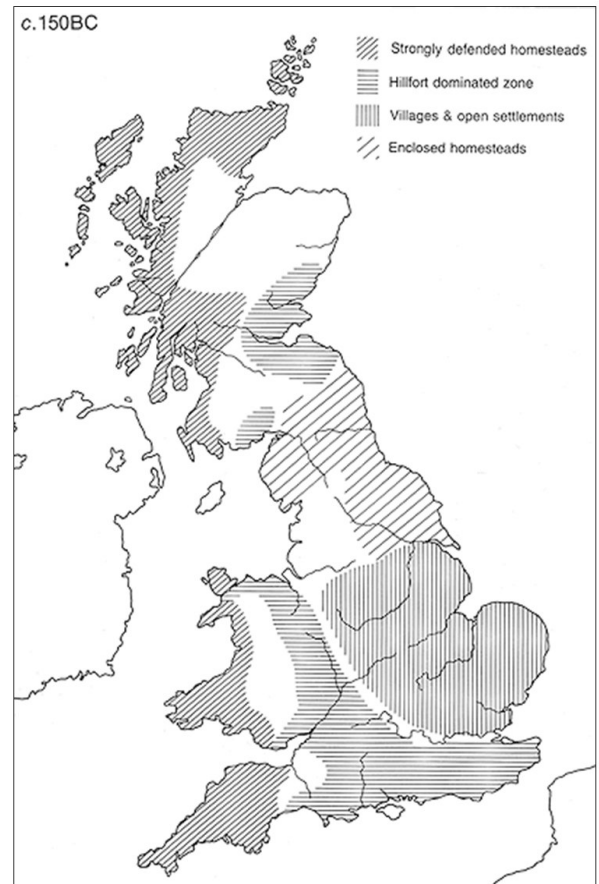


Data Source: Ordnance Survey, Historic Scotland and English Heritage

This study uses GIS datasets to plot archaeological monuments on a map of Great Britain. The existing map shows only scheduled monuments: those the government maintains. It also includes all time periods and types of settlements.

The goal is to expand this dataset to include all relevant monuments and also narrow it to exclude those that are not settlements from the Iron Age.

With enough refinement, the dataset should start to take the form of the map to the right. It will also contain specifically identified settlements, which we can then compare with ancient place-names to determine possible language and ethnicity.



Zones of differing settlement form  
(Source: Barry Cunliffe [1995] Iron Age Britain)